

Access: Max Function

In Access, the **Max** function returns the maximum value in a set of numeric values in a select query.

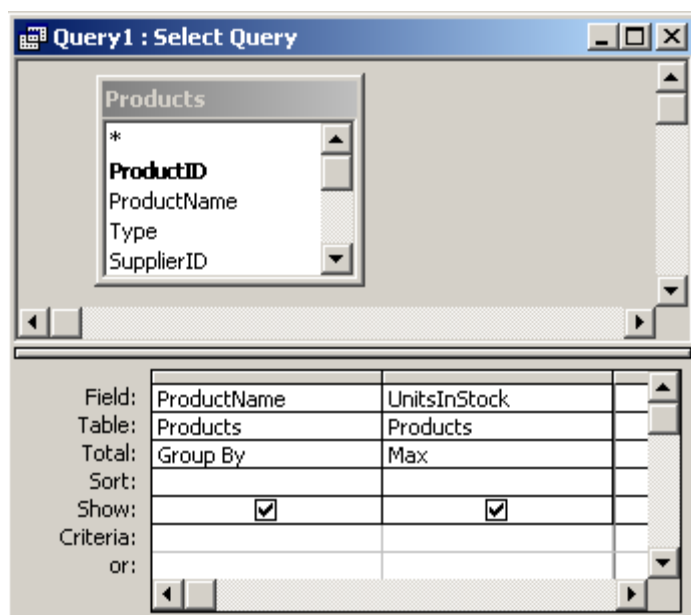
The syntax for the **Max** function is:

Max(expression)

expression is a numeric value. It can be a field or a formula that evaluates to a numeric expression.

SQL/Queries

You can use the **Max** function in a query by clicking on the Totals button in the toolbar (This is the button with the summation symbol). The **Max** function is used in conjunction with the **Group By** clause.



This query would return the *maximum* UnitsInStock for each ProductName.